

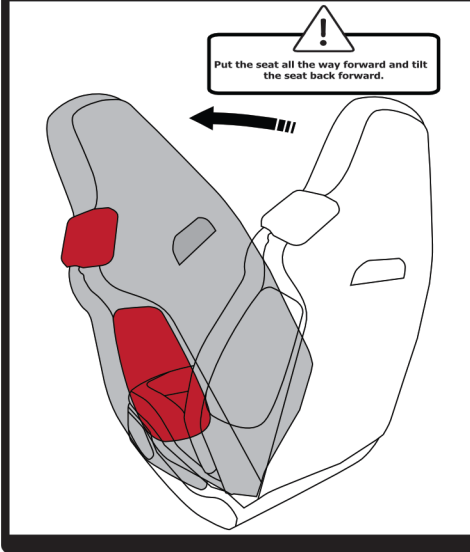
STEP 1:

- Locate the two pouches on the outside of the bottom skin. These two pouches identify the door side they should be on.
- Lay the bottom skin over the seat.



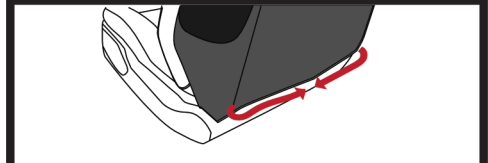
STEP 3:

- Locate the outside airbag and seat belt guide openings. Select the seat skin that conforms to that seat.



STEP 6:

- Connect the side Velcro straps to each other across the width of the backrest.

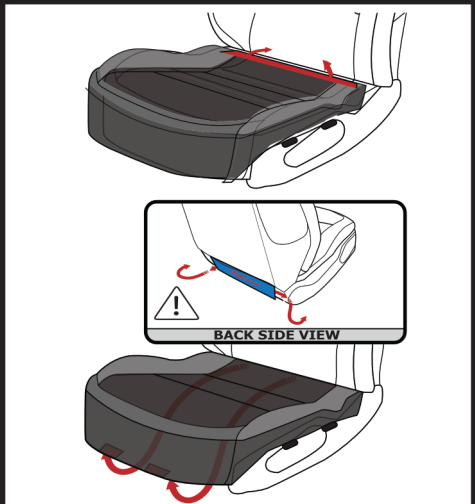


- Secure Velcro that goes through the headrest opening, attaching to the inner backside of the skin.



Step 2a:

- Slide the Velcro straps between the backrest and the cushion bottom. Guide the straps to each side of the non-removable debris flap.



- Lead the straps under the seat towards the front. Connect to the front Velcro tabs.

STEP 4:

- Release Velcro around head area of seat cover.
- Slide backrest cover over the seat back.



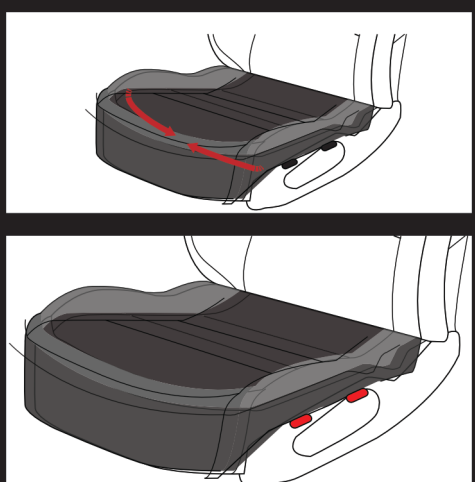
COMPLETE

- Align the skin to the airbag housing.
- Tuck the front edge of the skin under the seat belt guide.
- Repeat steps for other seat.



Step 2b:

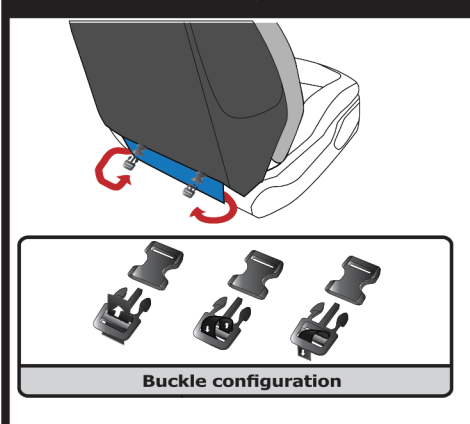
- Connect the side Velcro straps to each other across the width of the seat.



- Tuck the two pouches between the seat and the plastic molding.
- Work the cover material behind the plastic trim.

STEP 5:

- Push straps between the backrest and seat bottom. Guide the straps to each side of the non-removable debris flap.



- Loop the straps into the outer buckles on the backside of the skin. Pull the straps downward to tighten.